

# SMOKE AND CARBON MONOXIDE DETECTOR PLACEMENT

## 1. A smoke detector must be installed:

In each bedroom

Within 21 feet to the door of a bedroom

On each level of the residence

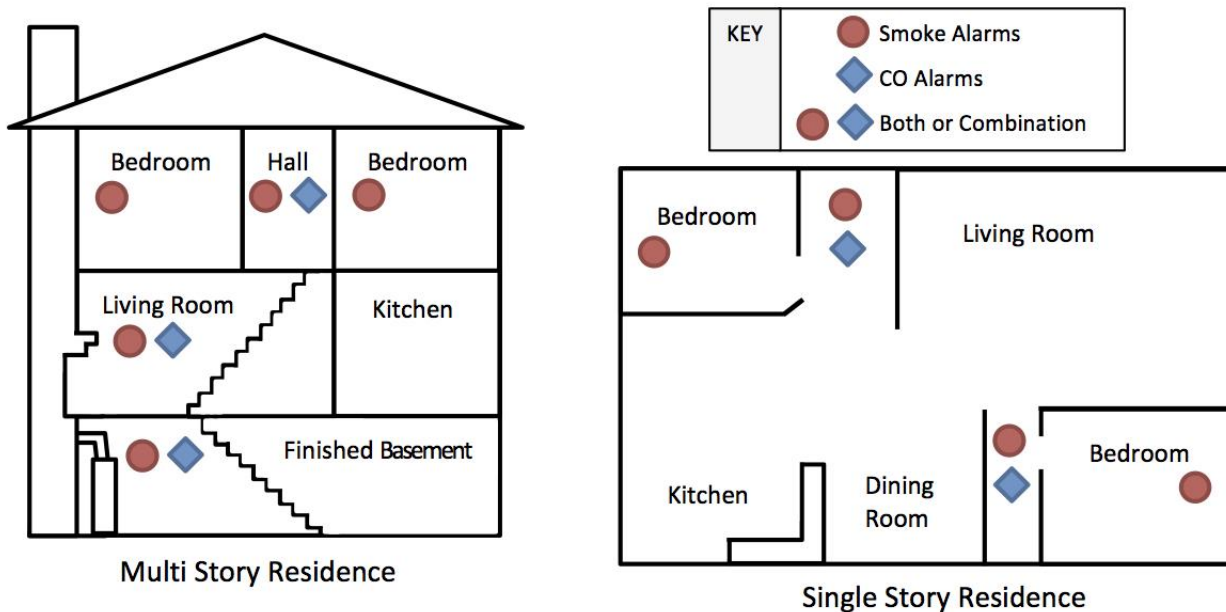
## 2. Carbon monoxide detectors must be installed:

In any dwelling units containing a fuel-burning appliance or a fireplace

In any dwelling units with attached private garages

Outside each sleeping area and in the immediate vicinity of the bedroom

If a fuel-burning appliance is installed in the bedroom, a CO detector must be installed in the bedroom



**Effective December 29, 2024 – ALL smoke detectors that are solely battery powered must have sealed, tamper-proof batteries.**